

Software available in the following languages



Microsoft
GOLD CERTIFIED
Partner

GFI MailEssentials

No. 1 anti-spam solution for Exchange/SMTP/Lotus

- No. 1 anti-spam filter
- Over **80,000** customers
- Over **60** awards
- Lowest market price for SMBs

The No. 1 anti-spam solution used by 80,000+ customers

The most effective way to beat spammers at their game is to use the no. 1 anti-spam solution GFI MailEssentials, which is used by 80,000+ customers worldwide and has won over 60 awards. It features two anti-spam engines to give administrators an ultra high spam capture rate of over 99% out of the box with minimal configuration. It also ships at the best price on the market.

SpamRazer is an additional anti-spam engine that provides a second layer of protection and will require no tweaking or training for it to be fully effective to filter the latest spam attacks such as NDR spam, CNN spam, MSNBC spam and any new types that appear on a regular basis. With SpamRazer filtering, IP reputation filtering, Bayesian and other advanced anti-spam technology modules, administrators can rest assured that the spam capture rate will be the highest possible. GFI MailEssentials also has a market-leading low rate of false positives.

GFI MailEssentials can detect and block phishing emails as well as add email management tools to your mail server: disclaimers, mail monitoring, Internet mail reporting, list server, server-based auto replies and POP3 downloading.

BENEFITS

- **Support for the industry leading messaging platforms including Microsoft Exchange 2000, 2003 and 2007**
- **Highest spam detection rate (99%) thanks to its Bayesian filtering technology**
- **Lowest false positives through its patent pending auto whitelist feature**
- **Server-based install, no client software required**
- **Voted MSEXchange.org Reader's Choice Award Winner in the Anti-Spam category for four years.**



Over 10 spam capture techniques

- SpamRazer (full info below)
- Bayesian filtering (full info below)
- Anti-phishing
- Attachment spam check filters for image, PDF spam, Excel and ZIP spam
- Email header analysis and keyword checking
- Third party DNS blacklists (DNSBL) checking
- Phishing URBL
- Sender Policy Framework (SPF)
- Directory Harvesting
- Custom white/blacklists
- SURBL
- Zombie check

SpamRazer: An additional anti-spam engine

The latest version includes a new, second anti-spam engine, SpamRazer, which provides a second layer of protection. It has been designed to be very simple to use and due to frequent updates, SpamRazer will require no tweaking or training for it to be fully effective whilst filtering the latest spam attacks. Not only will administrators benefit from out-of-the-box filtering but they will not need to tweak GFI MailEssentials each time a new attack is out.

Eliminate hard to catch NDR, MSNBC and CNN spam

The Botnet/Zombie check in GFI MailEssentials eliminates hard to catch attachment spam such as image spam, PDF spam, Excel and ZIP spam. The attachment spam check filters this attachment spam quickly, efficiently and with a very low rate of false-positives. GFI MailEssentials uses two anti-spam filter engines and a variety of technologies such as Bayesian Filtering and IP reputation filtering to keep Non-Delivery Report (NDR), CNN spam, MSNBC spam and many more at bay.

Server-based anti-spam and anti-phishing

GFI MailEssentials is server-based and installs on the mail server or at the gateway, eliminating the deployment and administration hassle of desktop-based anti-spam and anti-phishing products.

Intelligent automatic whitelist management reduces false positives

Whitelists enable you to ensure that mail from particular senders or domains are never flagged as spam, permitting more stringent anti-spam rules. GFI MailEssentials includes a patent-pending automatic whitelist management tool, which automatically adds mail recipients to your whitelist. This reduces false positives, without any need for additional administration.

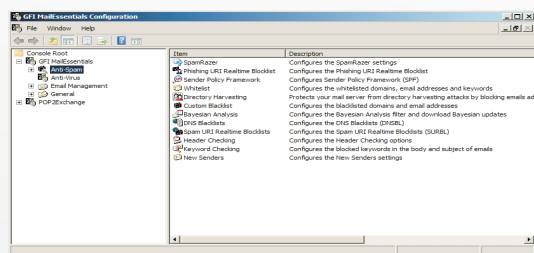
Bayesian filtering technology

GFI's Bayesian filter uses an advanced mathematical formula and a dataset which is 'custom-created' for your installation: The spam data is continuously updated by GFI and is automatically downloaded by GFI MailEssentials, whereas the ham data is automatically collected from your own outbound mail. In short, Bayesian filtering has the following advantages:

- Looks at the whole spam message, not just keywords or known spam signatures
- Learns from your outbound mail (ham) and reduces false positives
- Adapts itself over time by learning about new spam and new valid mail
- Dataset is unique to your company, making it impossible to bypass
- Multilingual and international.

Other features

- Precise dashboard
- Inbuilt spam reporting - daily reports to end-users
- Sort spam to users' junk mail folders
- Protect your users against the menace of phishing emails
- Support for multiple third party SURBL servers
- Instant view of emails from new senders
- Reports on spam filtering and email usage
- Support for SPF - the Sender Policy Framework
- Allow users to whitelist or blacklist via public folders
- Downloads updates to spam profile database
- Seamless integration with Exchange Server, Lotus Domino and other SMTP servers
- And much more!



GFI MailEssentials configuration

System requirements

- Windows 2000/2003 – Pro, Server or Advanced Server or Windows XP Professional.
- IIS5 SMTP service installed and running as an SMTP relay to your mail server.
- Microsoft Exchange server 2000, 2003, 2007, 4, 5 or 5.5, Lotus Domino 4.5 and up, or an SMTP/POP3 mail server.
- For the list server feature, Microsoft Message Queueing Services is required.
- Microsoft .NET Framework 2.0.

↓ **For more information and to download your evaluation version please visit <http://www.gfi.com/mes/>**

In association with:



Concentrix Limited
20 Granite Way, Mountsorrel Loughborough, LE12 7TZ
UK
tel: +44 (0)1509 410500
email: info@concentrix.co.uk
url: www.concentrix.co.uk