

Software available in the following languages



Microsoft
GOLD CERTIFIED
Partner

GFI MailArchiver

Leading email archiving solution for Exchange

- **No. 1** email archiving solution for SMBs
- Over **10,000** installations
- Lowest price, best performance
- Powerful & user-friendly

No. 1 email archiving solution for SMBs

Companies' dependency on email to do business brings with it various problems. Storage limitations, backups, problematic PST files, access to old emails and regulatory compliance or eDiscovery requests are a few issues that arise. Failure to address effectively could have serious repercussions on the organization.

One way to address each problem with a single solution is to implement GFI MailArchiver, an email archiving and email management software package for Exchange Server. With over 10,000 customers, GFI MailArchiver is the No. 1 email archiving software for SMBs and it is used by administrators to maintain a copy of all corporate email correspondence, manage and reduce the company's dependency on PST files and also meet a growing number of regulations on compliance, eDiscovery and other legislation. Furthermore, this easy to install product requires very little administrative effort and most importantly ships at the lowest price on the market.

BENEFITS

- **Outlook integration allows for fast and easy access to archived emails by employees**
- **Archive emails centrally for compliance purposes, ediscovery and internal investigations**
- **Backup emails in a way that they can be easily searched and restored in original format**
- **Off load emails from MS Exchange Server and increase server efficiency**
- **Reduce maintenance associated with PST files**
- **Tested and proven: used by tens of thousands of IT administrators**



Features for the administrator

Multi-lingual Support for indexing emails

The new version ships with multi-lingual support. This is useful for customers or organizations who receive emails in a range of languages such as English, Dutch, German, Italian, Russian, Czech, Arabic, Japanese and much more.

Integration with Exchange and other email servers

GFI MailArchiver leverages the journaling feature of Exchange Server, providing unparalleled scalability and reliability. Other email archiving solutions actually replace the email with a link to their database – this can be a point of failure and can bring down your entire email system. GFI MailArchiver works in parallel and does not touch the way Exchange works. GFI MailArchiver can be used with Exchange as well as other email servers with the capability of polling emails from a mail server which supports IMAP and Active Directory.

Outlook integration – Industry first non-stubbing technology

Integration with Outlook means that archived email can be accessed from Outlook as if it were their Exchange mailbox or local PST file. GFI MailArchiver users can now enjoy a faster and improved experience than many archiving solutions that leave a small stub file in place of the archived message which, accordingly to Microsoft, creates problems for administrators in terms of server performance as small portions of the emails are still left in the Exchange Server store. GFI MailArchiver is the first solution to provide Outlook integration without stubbing whilst also providing full real-time synchronization with all folders/emails in the Exchange mailbox.

Automatically archive corporate email into one storage area

Your mail server is not the ideal place to store all organizational email: Moving old emails into a database will keep your mail server performance high and email stores compact. You may archive your email in:

- A SQL database
- Directly to an NTFS hard drive

Reduce email storage requirements

GFI MailArchiver compresses and decompresses attachments on the fly, which results in considerable savings in terms of storage when compared to storing attachments in the Exchange stores.

Unlimited mailbox

With GFI MailArchiver, users benefit from a near 'unlimited' mailbox – with easy access to their email at all times – because the software archives email in an SQL database and not on Exchange. With fewer storage demands, a smaller Exchange store, and no stub files left on the server, administrators will notice a marked increase in performance.

End PST headaches

Using GFI MailArchiver for Exchange eliminates the need for users to archive their mail in PST files on local hard disks. With GFI MailArchiver, users can browse to the web search interface and retrieve past email from the database, rather than having to dig through a store of PST files on disk to find a particular email.

Helps comply with SOX and other acts and regulations

By archiving all company email, GFI MailArchiver helps organizations to meet regulatory compliance such as SOX. Under SOX, Security and Exchange Commission (SEC) and E-Comm Act 2000 rules, public companies must prove that their internal controls and audit trails are sound and that their processes are capable of producing certifiably correct data.

Features for the user

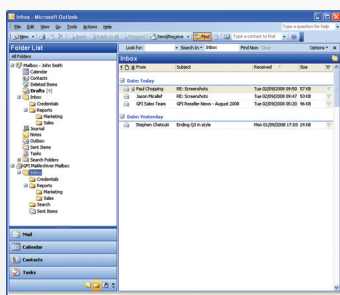
- Access archived email from Outlook as if it were in an Exchange mailbox or a local PST file
- Access emails (including deleted) from any location through a browser
- Advanced email search and 'Saved Search' capabilities (including attachments)
- OneClick Restore a single email to a mailbox
- Support for multilingual user interfaces (including English, Dutch, French, German, Italian, Russian, Spanish, Czech, Arabic, Japanese, Simplified Chinese and Traditional Chinese).

Other features:

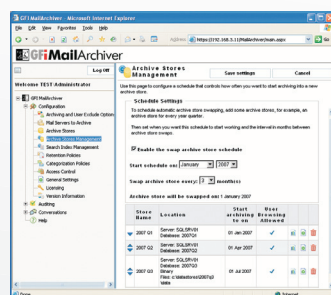
- Migrate old PST files stored on client machines
- Set up email retention and categorization policies
- Give viewing rights and exempt users from archiving email
- Collect and archive emails in one geographical location
- Audit your archived email to ensure they have not been tampered

System requirements

- Windows 2000 (Service Pack 3 or higher) or Windows 2003
- Access to Microsoft Exchange Server 2000 or later
- Microsoft .NET Framework 2.0
- Internet Information Services (IIS) – World Wide Web service.



The GFI MailArchiver Mailbox folder in Microsoft Outlook (Outlook Connector)



Archive stores management

↓ For more information and to download your evaluation version please visit <http://www.gfi.com/mailarchiver/>

In association with:



Concentrix Limited

20 Granite Way, Mountsorrel
Loughborough, LE12 7TZ
UK

tel: +44 (0)1509 410500

email: info@concentrix.co.uk

url: www.concentrix.co.uk