

## Sage 200 2009 Business Management Suite

The Next Generation of Sage Software

The Sage 200 suite is a powerful set of integrated business management software modules for mid-sized companies. The latest release, Sage 200 2009, helps companies manage their whole business.

### Summary of Sage 200

Sage 200 helps automate and bring together all the key processes in each area of your business: from marketing, sales and customer service, right through to finance, operations, projects and a whole range of other activities.

### Business Wide Application

Sage 200 is a genuine business-wide application. Rather than having to run separate, unconnected pieces of software to manage different areas of your company, Sage 200 enables your organisation to control all of its main businesses processes from within a single software suite. In other words, Sage 200 is a fully integrated business management software solution.

### Robust, Flexible Software

Because of Sage's extensive experience of developing business software, Sage 200 is a highly robust solution. It's also highly flexible, with modular and industry specific applications to manage information and processes throughout your company - whatever business you're in. What's more, Concentrix can deploy Sage 200 rapidly, with precise levels of configuration or customisation to meet the exact needs of your business.

### Brings Your Business Together

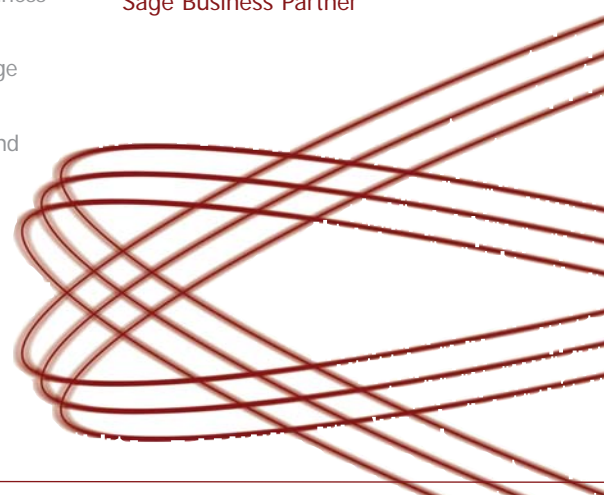
Because Sage 200 is an integrated solution which connects all the main functions of your business, it delivers massive gains in efficiency and effectiveness. Business process improvement will begin right from the start of your Sage 200 project. The software delivers a quick return on investment and will soon increase your company's competitiveness, customer satisfaction and profitability.

### Manages Each Stage of Your Business Process

Sage 200 has dedicated tools for each area and process within your business: from sales and marketing to accounts, operations, customer service, senior management - and everything else in between. And it doesn't matter how simple, complex or unique your business processes are, because as highly experienced and fully accredited Sage Business Partners, Concentrix will implement your system efficiently and effectively.



- » A powerful suite of business management software
- » Specifically designed for mid-sized businesses
- » Integrates your key business processes
- » Helps improve efficiency, competitiveness and customer satisfaction
- » Flexible, modular solution configured to your precise business requirements
- » Provides a quick return on investment
- » Concentrix is a Fully Accredited Sage Business Partner



# Sage 200 2009 Business Management Suite

## The Next Generation of Sage Software

### The Sage 200 Modules

The Sage 200 suite consists of two foundation modules. Through your Sage Business Partner, you can add further modules to suit your industry segment or processes within your business as necessary. The foundation modules of Sage 200 are:

- » Sage 200 Financials
- » Sage 200 CRM

There's also a variety of extra modules available, including industry specific as well as process specific applications. These include:

- » Sage 200 Commercials
- » Sage 200 Project Accounting
- » Sage 200 Construction
- » Sage 200 Manufacturing
- » Sage 200 Point of Sale
- » Sage 200 Wholesale and Retail
- » Sage 200 Business Analysis and Forecasting

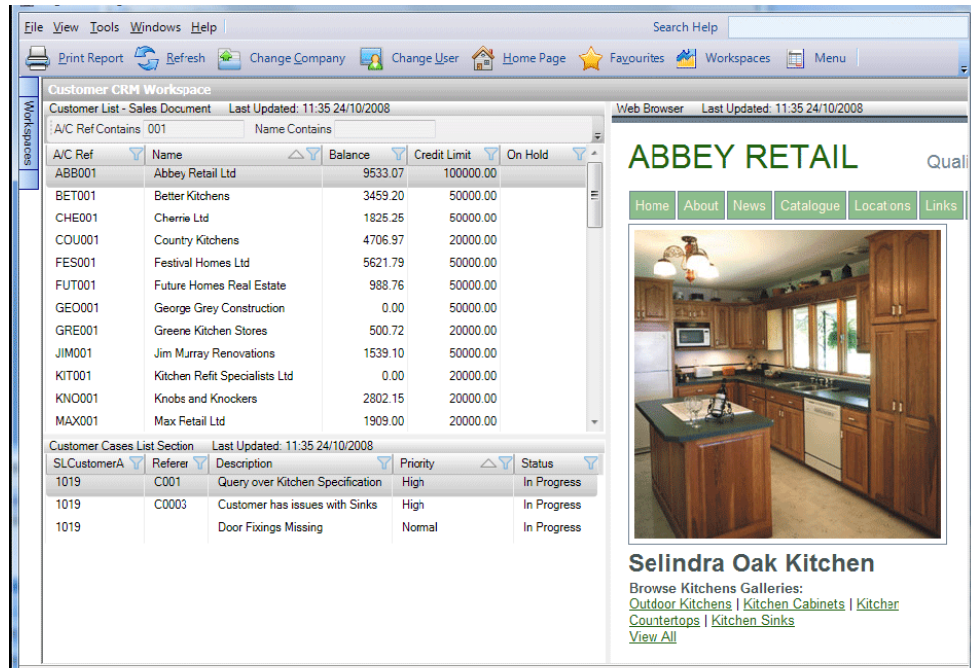
### Timely, Accurate Information

Because Sage 200 works throughout your business, it can provide data from any area, to anyone else who needs it. It also enables detailed analysis of all the data and information throughout the process. So with greater control of your key business functions and increased transparency, Sage 200 helps your staff make better decisions: from day-to-day operations to key strategic and financial planning.

### Concentrix Limited

20 Granite Way, Mountsorrel  
Loughborough, LE12 7TZ

T: +44 (0)1509 410500  
F: +44 (0)1509 410501  
E: [info@concentrix.co.uk](mailto:info@concentrix.co.uk)  
W: [www.concentrix.co.uk](http://www.concentrix.co.uk)



Screenshot from Sage 200 2009

### What's New in Sage 200 2009?

The key themes for Sage 200 2009 include:

- » Introduction of Sage Payment Options
- » Improved Project Accounting
- » Enhanced usability and flexibility
- » Information management - making information within each area of Sage 200 more available to users within their day-to-day roles.

### About Sage Software

Sage is a leading UK business software supplier, with over 5.7 million customers worldwide. Formed in 1981, Sage now employs 14,800 people in its market leading companies worldwide.

### About Concentrix

Concentrix is an independent UK business management software, customer relationship management (CRM) software and IT solutions provider.

Founded in 1999, Concentrix is a fully Accredited Sage Business Partner, and helps companies increase competitiveness, profitability and customer satisfaction by improving business processes, systems and IT.